

KIPPO MARU 1,829 m³ LPG Carrier

26

☐ Contents ☐ By Builder ☒ By Ship Type



KIPPO MARU 1,829 m³ LPG Carrier **26**
[Contents](#) [By Builder](#) [By Ship Type](#)

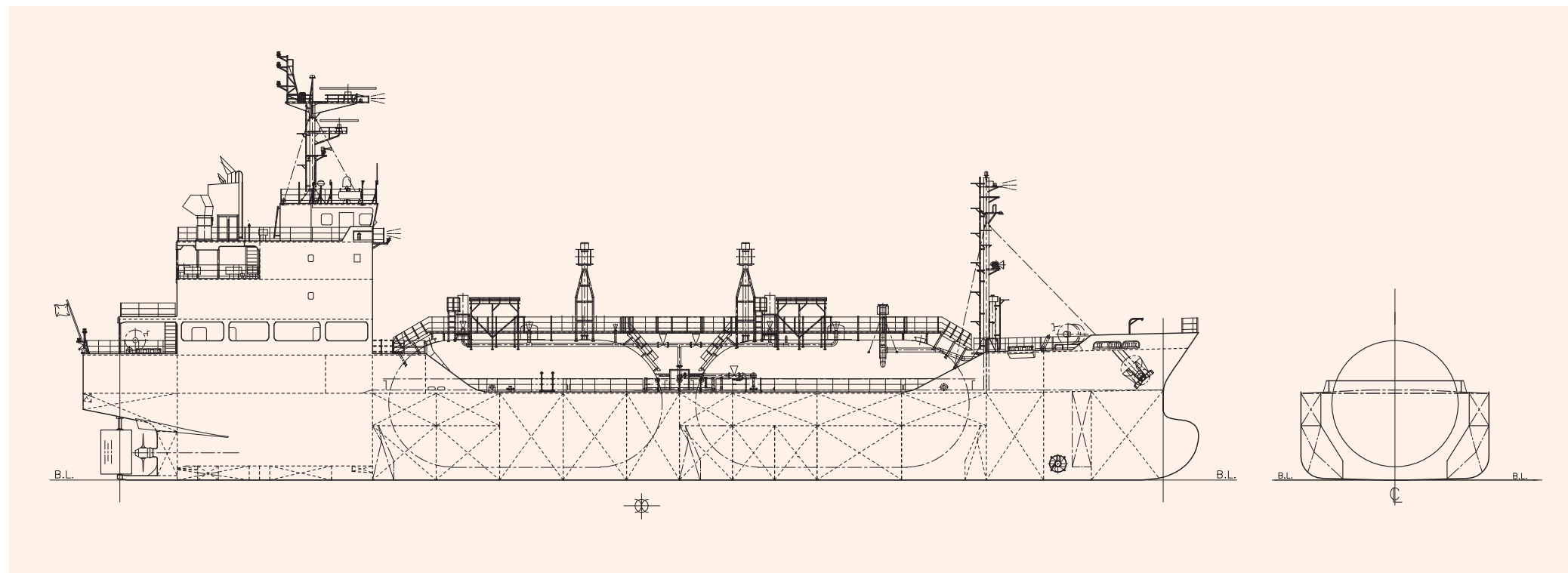
The 1,829m³ LPG carrier KIPPO MARU was built at SHIN KURUSHIMA HASHIHAMA DOCKYARD CO., LTD. and delivered to Japanese Owner in June 2020.

Features

1. The vessel was built for ocean transport of LPG (main cargo: VCM).
2. Two(2) sets of cargo tank are cylindrical shell with hemi-spherical heads and have sufficient strength with a specific pressure of 1.77 MPa(High).
3. Each cargo tank is equipped with two (2) deepwell pump driven by a electric motor.

PRINCIPAL PARTICULARS

Length (o.a.)	75.92 m	NOR (kw×rpm)	1,375 kW x abt. 294 min ⁻¹
Length (b.p.)	71.00 m	Speed (service)	12.3 knots
Breadth (mld.)	12.80 m	Complement	11 P
Depth (mld.)	5.90 m	Classification	NK
Draft (mld.)	4.80 m	Cargo pump	2 sets Deepwell type
Gross tonnage	1,544		350 m ³ /h x 120mTH (Butane γ = 0.601)
Deadweight	2,020 t		200 m ³ /h x 150mTH (VCM γ = 0.948)
Main engine	AKASAKA-AX33B	Loading capacity (tank)	1,829 m ³
MCR (kw×rpm)	1,618 kW x 310min ⁻¹	Builder	Shin Kurushima Hashihama Dockyard Co., Ltd.



KISAN 1,549 m³ LEG Carrier 27

☐ Contents ☐ By Builder ☒ By Ship Type



KISAN 1,549 m³ LEG Carrier 27

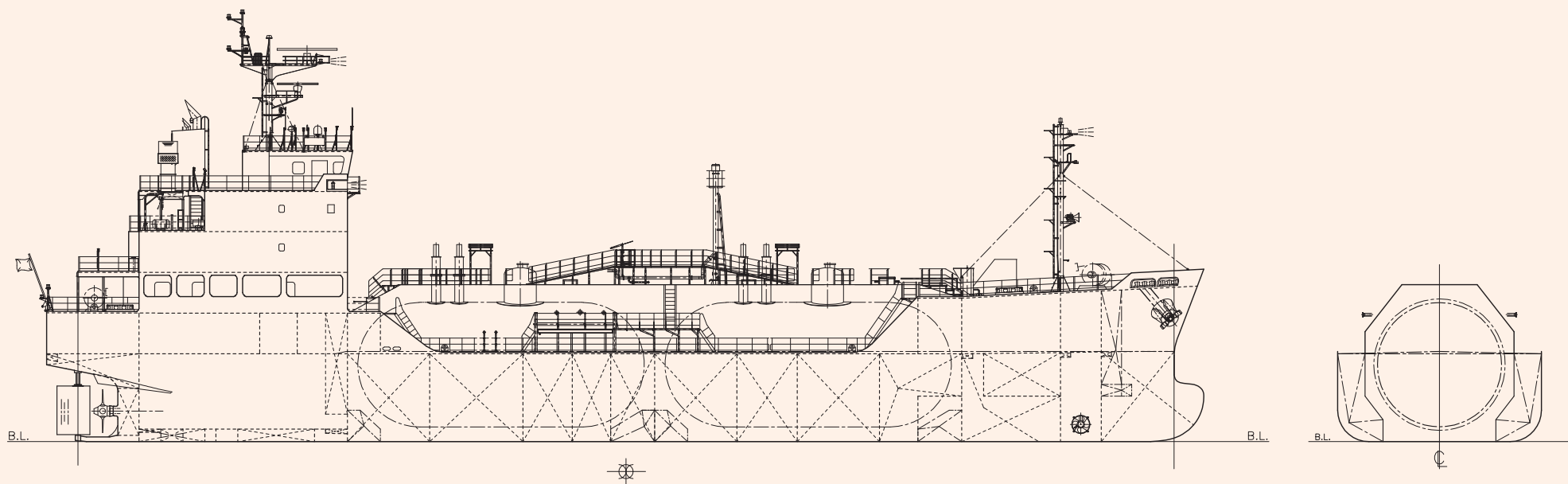
The 1,549m³ LEG carrier KISAN was built at Shin Kurushima Hashihama Dockyard Co., Ltd. and delivered to Japanese Owner in September 2021.

Features

1. The vessel is a Semi-pressurised, semi-refrigerated type liquefied ethylene gas carrier equipped with a cargo hold thermal protection and re-liquefaction system.
2. The vessel was built for ocean transport of LEG.
3. Each cargo tank is equipped with two (2) deepwell pump driven by a electric motor and a re-liquefaction unit.

PRINCIPAL PARTICULARS

Length (o.a.)	73.87 m	MCR (kw×rpm)	1,912 kW x 270min ⁻¹
Length (b.p.)	69.95 m	NOR (kw×rpm)	1,625 kW x about 256 min ⁻¹
Breadth (mld.)	13.00 m	Speed (service)	12.8 knots
Depth (mld.)	5.60 m	Complement	11 P
Draft (mld.)	4.35 m	Classification	NK
Gross tonnage	1,742	Cargo pump	4 sets Deepwell type 90 m ³ /h x 120mTH
Deadweight	1,559 t	Loading capacity (tank)	1,549 m ³
Main engine	AKASAKA-AX34A	Builder	Shin Kurushima Hashihama Dockyard Co., Ltd.



MTM VANCOUVER 22,000 DWT Chemical Carrier

33

[Contents](#) [By Builder](#) [By Ship Type](#)



MTM VANCOUVER 22,000 DWT Chemical Carrier 33

The 22,000-dwt type chemical tanker MTM VANCOUVER was completed in September 2019 at SHIN KURUSHIMA DOCKYARD CO., LTD. and delivered to the Singaporean Owner.

Features

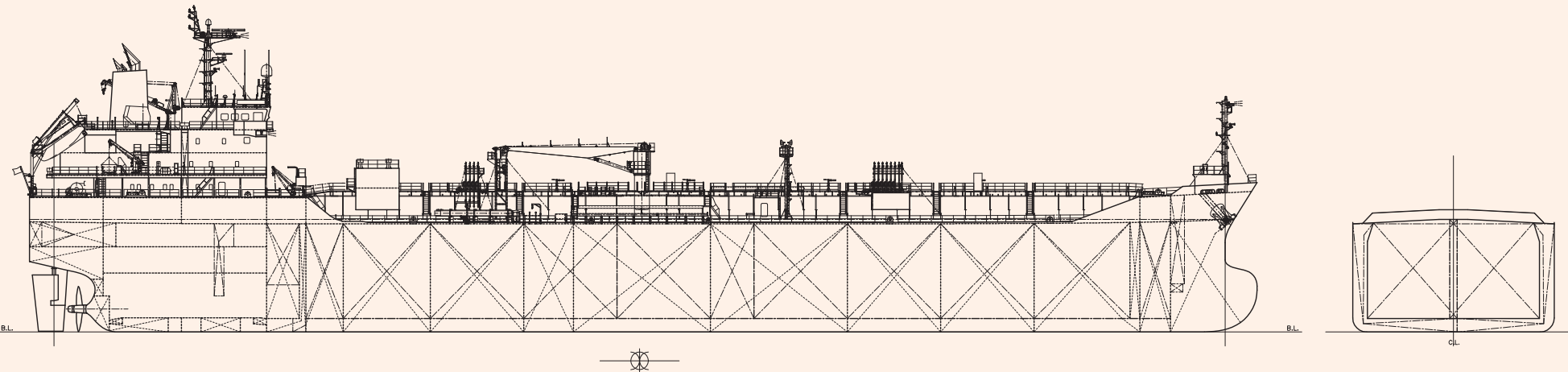
- 1. The vessel was built for ocean transport of chemicals (IMO type II and III) and oil products.
- 2. The vessel has twenty (20) cargo tanks constructed of SUS316LN stainless steel and SUS316L clad steel.
- 3. All cargo tanks (including slop tanks) are of double-hull structure and have sufficient strength to permit the carriage of a full cargo with a specific gravity of 1.30 t/m3.
- 4. Structures protruding into the tanks have been mini-mized by using an on-deck girder system for the upper deck and vertical corrugated type bulkheads.

5. Each cargo tank is equipped with one (1) submerged cargo pump driven by a hydraulic motor; these are remotely controlled from the cargo control room.

6. Cargo handling is simplified by a 10 metric-ton hydraulically operated deck crane for hose handling; it is arranged a midship on the upper deck.

PRINCIPAL PARTICULARS

Length (o.a.)	149.93 m	NOR (kW×rpm)	3,645 kW x about 91.5 min ⁻¹
Length (b.p.)	143.00 m	Speed (service)	14.0 knots
Breadth (mld.)	24.60 m	Complement	25 P
Depth (mld.)	13.20 m	Classification	NK
Draft (mld.)	9.00 m	Cargo pump	Submerged type
Gross tonnage	13,136		200 m³/h x 115mLC x 20 sets (based on S.G. 0.8)
Deadweight	22,344 t		70 m³/h x 70mWC x 1 set (Portable type)
Main engine	6UEC45LSE-1	Loading capacity (tank)	22,691 m³
MCR (kW×rpm)	4,860 kW x 101 min ⁻¹	Builder	Shin Kurushima Dockyard Co., Ltd.



RHAPSODY 35,000 DWT Chemical Carrier 34

☐ Contents ☐ By Builder ☒ By Ship Type



RHAPSODY 35,000 DWT Chemical Carrier 34

The 35,000 dwt type chemical carrier RHAPSODY was completed in December 2020.
at Shin Kurushima Dockyard Co., Ltd. to a Singaporean Owner.

Features

- 1. The vessel was built for ocean transport of chemicals (IMO type II and III) and oil products.
- 2. The vessel has twenty-eight (28) cargo tanks constructed of SUS316L stainless steel and SUS316L clad steel.
- 3. All cargo tanks (including slop tanks) are of double-hull structure and have sufficient strength to permit the carriage of a full cargo with a specific gravity of 1.30 t/m³.
- 4. Structures protruding into the tanks have been mini-mized by using an on-deck girder system for the upper deck and vertical corrugated type bulkheads.

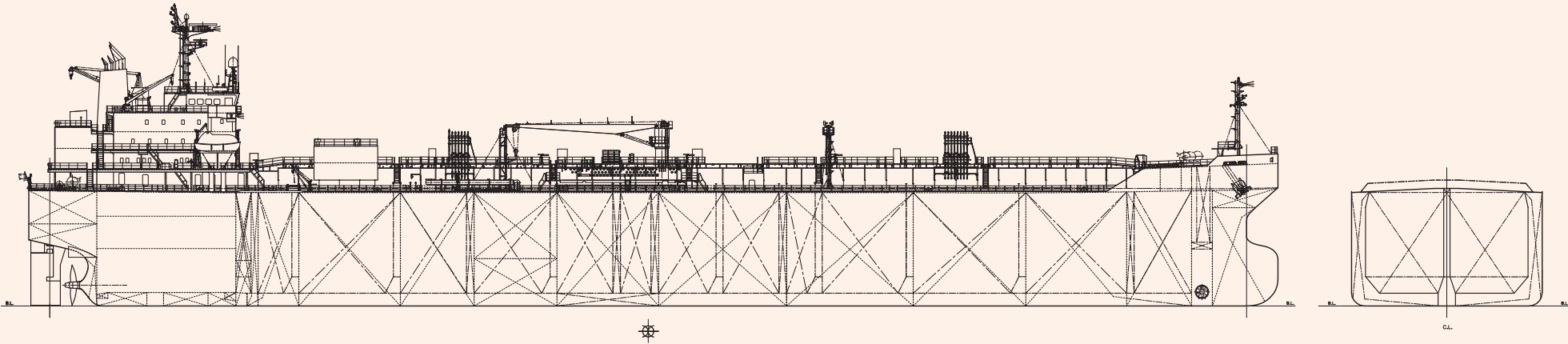
5. Each cargo tank is equipped with one (1) submerged cargo pump driven by a hydraulic motor; these are remotely controlled from the cargo control room.

6. Cargo handling is simplified by a 10 metric-ton hydraulically operated deck crane for hose handling; it is arranged a midship on the upper deck.

PRINCIPAL PARTICULARS

Length (o.a.)	179.54 m
Length (b.p.)	172.00 m
Breadth (mld.)	27.40 m
Depth (mld.)	16.30 m
Draft (mld.)	10.00 m
Gross tonnage	21,326
Deadweight	34,766 t
Main engine	MAKITA-MITSUI-MAN B&W 6S46ME-B8.5
MCR (kWxrpm)	5,800 kW x 110 min ⁻¹

NOR (kWxrpm)	4,930 kW x about 104 min ⁻¹
Speed (service)	14.0 knots
Complement	30 P
Classification	NK(Type II & III)
Cargo pump	Submerged type
	330 m³/h x 115mLC x 14 sets (based on S.G. 0.8)
	200 m³/h x 115mLC x 14 sets (based on S.G. 0.8)
	70 m³/h x 70mLC x 1 set (Portable type)
Loading capacity (tank)	37,585 m³
Builder	Shin Kurushima Dockyard Co., Ltd.



ABILITY 64,000 DWT Bulk Carrier

64

☐ Contents ☐ By Builder ☒ By Ship Type



ABILITY 64,000 DWT Bulk Carrier 64

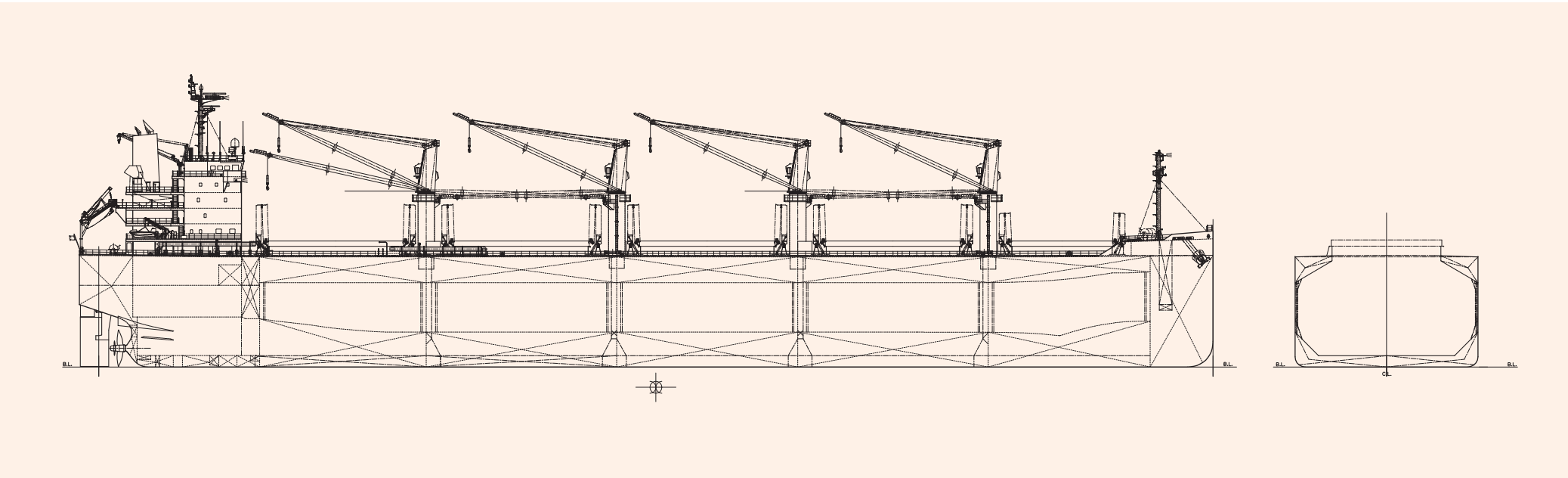
The 64,000-dwt type bulk carrier ABILITY was built at SHIN KURUSHIMA DOCKYARD CO., LTD. and delivered to the Panamanian Owner in July 2021.

Features

- 1. The vessel has five (5) cargo holds.
- 2. The upper deck hatch covers are folding type and operated by hydraulic cylinders.
- 3. The vessel has three (3) sets of 30.5-ton and one (1) set of 30.5/24-ton electro-hydraulic single deck cranes.

PRINCIPAL PARTICULARS

Length (o.a.)	199.92 m	MCR (kW×rpm)	7,390 kW x 101 rpm
Length (b.p.)	196.50 m	NOR (kW×rpm)	5,912 kW x about 93.5 rpm
Breadth (mld.)	32.26 m	Speed (service)	14.0 knots
Depth (mld.)	19.40 m	Complement	25 P
Draft (mld.)	11.30m	Classification	NK
Gross tonnage	36,757	Loading capacity (grain)	81,003 m³
Deadweight	64,253 t	(bale)	77,037 m³
Main engine	MITSUI-MAN B&W 6S50ME-C9.6-EGRBP	Builder	Shin Kurushima Dockyard Co., Ltd.



BALSA 96 7,735 DWT Bulk Carrier 72

☐ Contents ☐ By Builder ☒ By Ship Type



BALSA 96 7,735 DWT Bulk Carrier 72

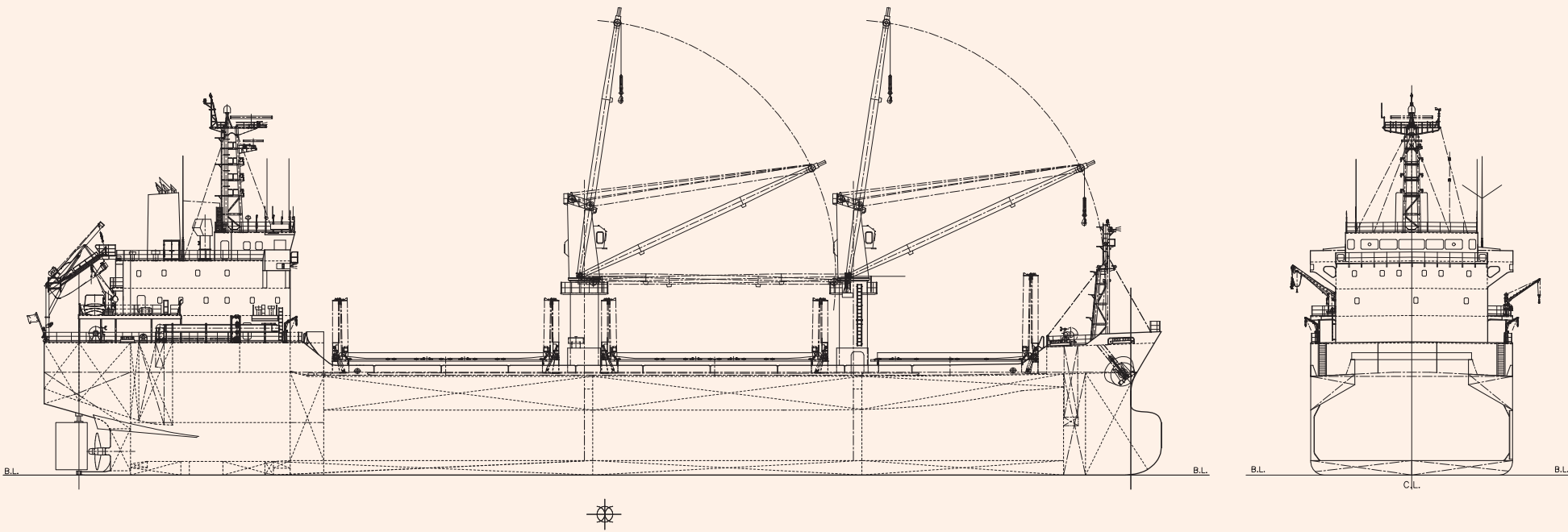
The 7,735 dwt bulk carrier BALSA 96 was built at Shin Kurushima Hashihama Dockyard Co., Ltd., and delivered to MERCADO VALLEY LINE CORP. in November 2019.

Features

- 1. The vessel has three (3) cargo holds.
- 2. The hatch covers are folding type and operated by hydraulic cylinders.
- 3. The vessel has two (2) sets of 30-ton electro-hydraulic type single deck crane.

PRINCIPAL PARTICULARS

Length (o.a.)	106.33 m	MCR (kwxrpm)	3,250 kW x 210 min ⁻¹
Length (b.p.)	100.10 m	NOR (kwxrpm)	2,763 kW x about 199 min ⁻¹
Breadth (mld.)	19.20 m	Speed (service)	13.2 knots
Depth (mld.)	9.40 m	Complement	23 P
Draft (mld.)	6.80 m	Classification	NK
Gross tonnage	5,708	Loading capacity (grain)	9984 m ³
Deadweight	7,735 t	(bale)	9471 m ³
Main engine	MAKITA-MITSUI-MAN B&W 5L35MC6.1	Builder	Shin Kurushima Hashihama Dockyard Co., Ltd.



ORIENTAL JETTY 17,000 DWT Bulk Carrier 73

☐ Contents ☐ By Builder ☒ By Ship Type



ORIENTAL JETTY 17,000 DWT Bulk Carrier 73

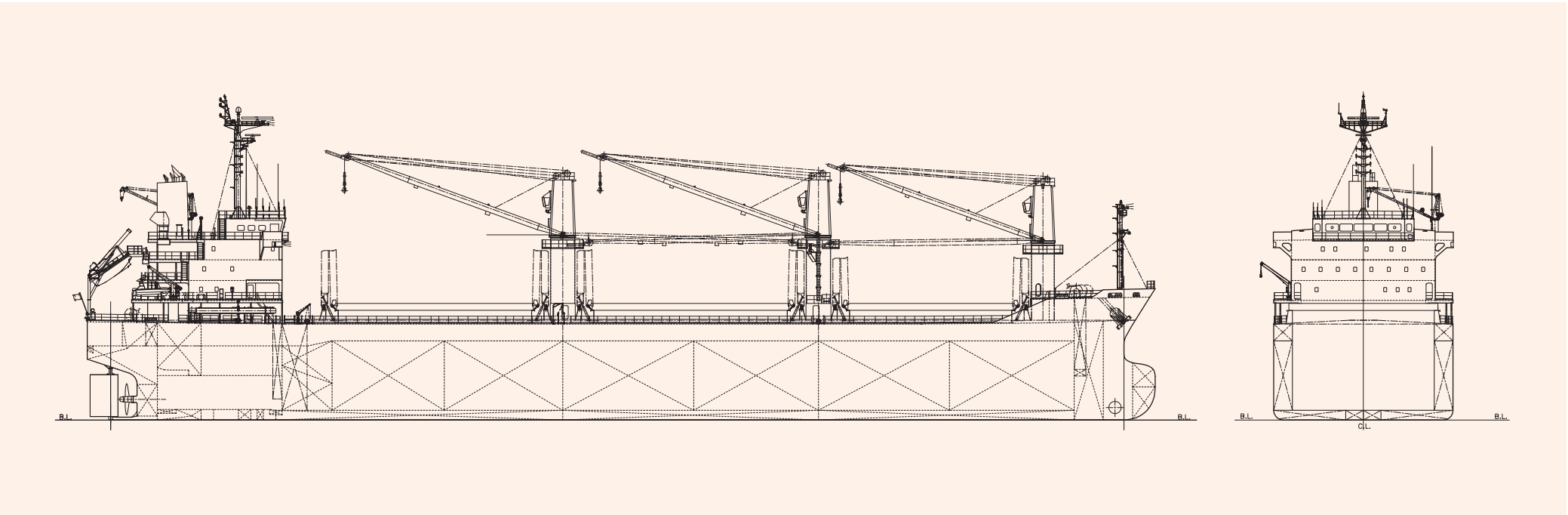
The 17,000-dwt type bulk carrier ORIENTAL JETTY was built at SHIN KOCHI JYUKO CO., LTD. and delivered to the Panamanian Owner in January 2020.

Features

- 1 The vessel has double hull construction for all three (3) cargo holds. No.1, 2, 3 cargo holds are fully box shape construction.
- 2. Wide size hatches and box shape holds are highly efficient for steel coils and other cargoes loading.
- 3. The hatch covers are wide folding type and operated by hydraulic cylinders.
- 4. The vessel has three (3) sets of 30.7-ton electro-hydraulic single deck cranes.

PRINCIPAL PARTICULARS

Length (o.a.)	137.03 m	MCR (kwxrpm)	3,900 kW x 173 min ⁻¹
Length (b.p.)	130.00 m	NOR (kwxrpm)	3,510 kW x about 167 min ⁻¹
Breadth (mld.)	23.00 m	Speed (service)	12.9 knots
Depth (mld.)	12.30 m	Complement	21 P
Draft (mld.)	8.47m	Classification	NK
Gross tonnage	11,289	Loading capacity (grain)	21,120 m ³
Deadweight	16,939 t	(bale)	20,706 m ³
Main engine	MAKITA-MITSUI-MAN B&W 6S35MC7	Builder	Shin Kochi Jyuko Co., Ltd.



SUNRISE AUTUMN 19,999 DWT Bulk Carrier

74

☐ Contents ☐ By Builder ☒ By Ship Type



SUNRISE AUTUMN 19,999 DWT Bulk Carrier 74

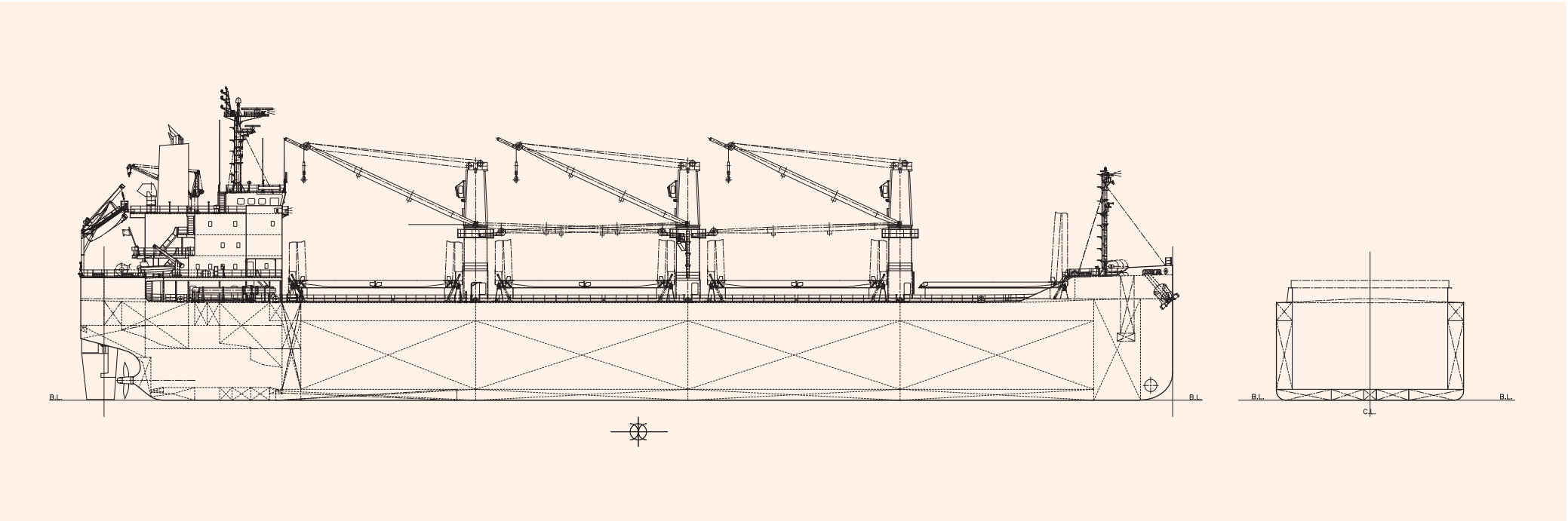
The 19,999-dwt bulk carrier SUNRISE AUTUMN was built at SHIN KURUSHIMA HIROSHIMA DOCKYARD CO., LTD. and delivered to a Panamanian Owner in September 2021.

Features

- 1. The vessel has double hull construction for all four (4) cargo holds. No.2 and No.3 cargo holds are fully box shape construction.
- 2. Wide size hatches and box shape holds are highly efficient for steel coils and other cargoes loading.
- 3. The hatch covers are wide folding type and operated by hydraulic cylinders.
- 4. The vessel has three (3) sets of 30.7-ton electro-hydraulic single deck cranes.

PRINCIPAL PARTICULARS

Length (o.a.)	139.91 m	MCR (kW×rpm)	4,200 kW x 127 min ⁻¹
Length (b.p.)	136.90 m	NOR (kW×rpm)	3,570 kW x about 120 min ⁻¹
Breadth (mld.)	24.00 m	Speed (service)	13.1 knots
Depth (mld.)	12.50 m	Complement	22 P
Draft (mld.)	8.10 m	Classification	NK
Gross tonnage	13,069	Loading capacity (grain)	24,505 m ³
Deadweight	19,999t	(bale)	23,917 m ³
Main engine	MAKITA-MITSUI-MAN B&W 7S35ME-B9.5	Builder	Shin Kurushima Hiroshima Dockyard Co., Ltd.



MIRAI 15,000 DWT Coal Carrier

86

☐ Contents ☐ By Builder ☒ By Ship Type



MIRAI 15,000 DWT Coal Carrier 86

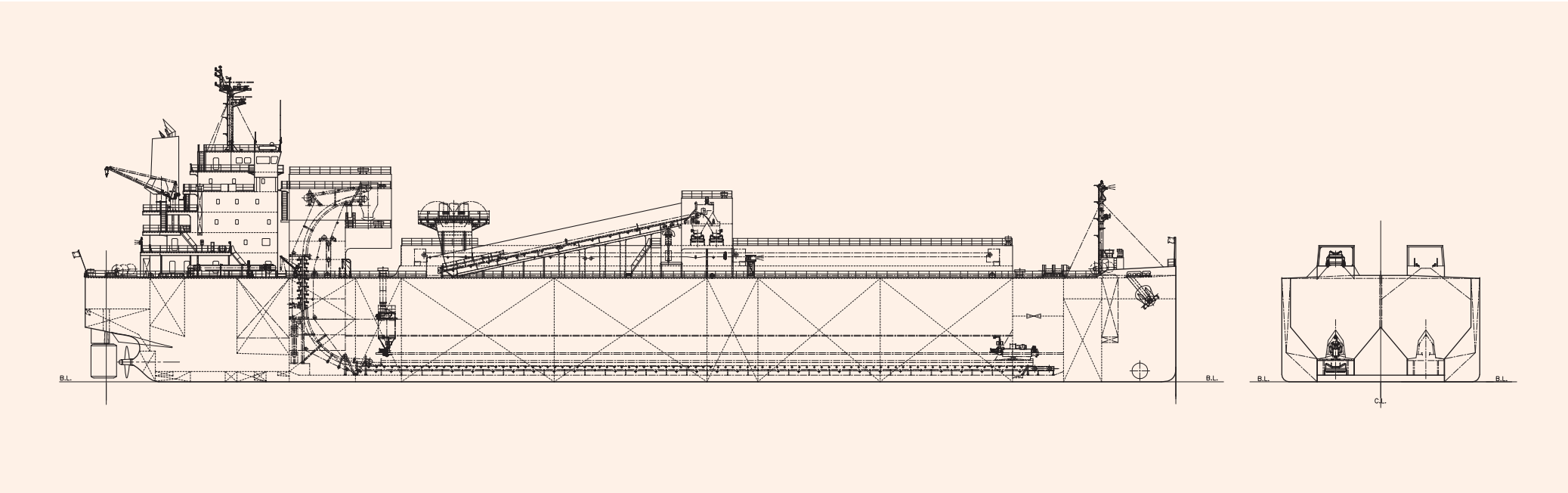
The 15,000-dwt Coal Carrier MIRAI was built at Shin Kurushima Dockyard Co., Ltd., and delivered to a Japanese Owner in January 2021.

Features

- 1. The Limestone unloading system has a capacity of 2,400 t/h mechanical unloading (2-lines).
- 2. The system consists of hold bottom TC chain conveyors, bucket elevators, etc.
- 3. Her hold is designed and built with special care for cargo residue.
- 4. Side thruster is installed for efficient maneuverability in port.

PRINCIPAL PARTICULARS

Length (o.a.)	149.91 m	Main engine	AKASAKA 7UEC35LSE-Eco-B2
Length (b.p.)	147.00 m	MCR (kW×rpm)	5,880 kW x 167 min ⁻¹
Breadth (mld.)	27.20 m	NOR (kW×rpm)	4,988 kW x about 158 min ⁻¹
Depth (mld.)	14.20 m	Speed (service)	13.0 knots
Draft (mld.)	6.48 m	Complement	13 P
Gross tonnage	18,419	Classification	NK
Deadweight	15,000 t	Loading capacity (grain)	18,027 m ³
		Builder	Shin Kurushima Dockyard Co., Ltd.



SHINEI MARU 5,000 DWT Limestone Carrier

87

☐ Contents ☐ By Builder ☒ By Ship Type



SHINEI MARU 5,000 DWT Limestone Carrier 87

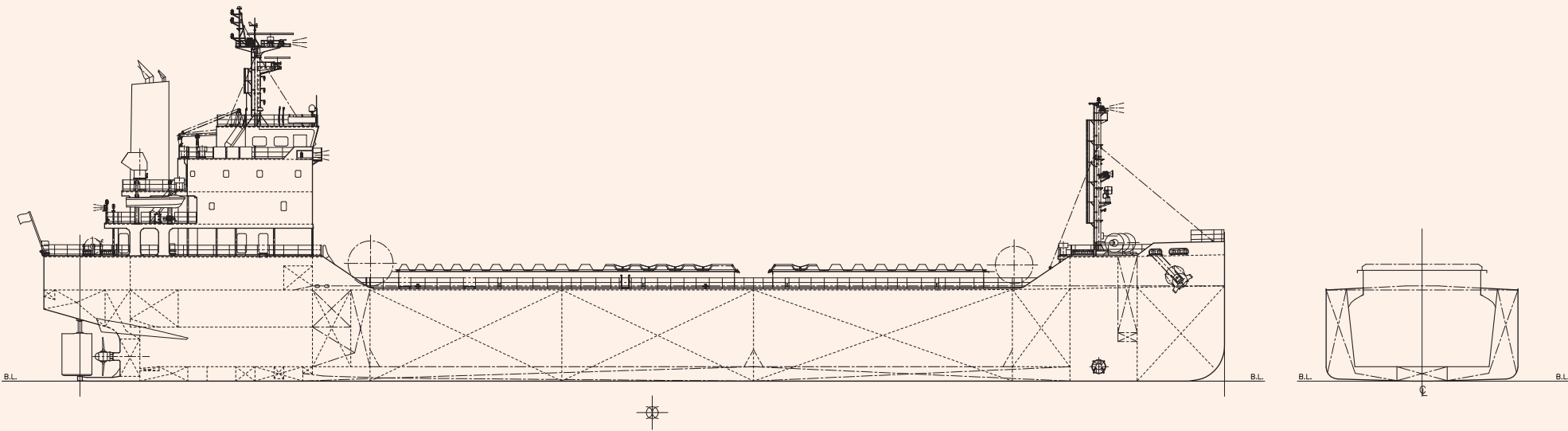
The 5,000-dwt type Limestone Carrier SHINEI MARU was built at SHIN KURUSHIMA HASHIHAMA DOCKYARD CO., LTD. and delivered to the Japanese Owner in July 2020.

Features

- 1. The vessel has two independent cargo tanks with insulation.
- 2. Cargo tanks sufficiently strong to carry a full cargo with a specific gravity of 1.3t/m³.
- 3. Bow thruster is equipped for good-in-harbor maneuverability.

PRINCIPAL PARTICULARS

Length (o.a.)	98.51 m	Main engine	HANSHIN LH41LA
Length (b.p.)	95.50 m	MCR (kW×rpm)	2,647 kW x 240 rpm
Breadth (mld.)	16.00m	NOR (kW×rpm)	2,250 kW x about 227 rpm
Depth (mld.)	7.60 m	Speed (service)	13.0 knots
Draft (mld.)	6.262 m	Complement	12 P
Gross tonnage	3,305	Classification	NK
Deadweight	5,016 t	Loading capacity (grain)	4,621 m³
		Builder	Shin Kurushima Hashihama Dockyard Co., Ltd.



TAHO OCEANIA 23,547 DWT Cement Carrier 88

☐ Contents ☐ By Builder ☒ By Ship Type



TAHO OCEANIA 23,547 DWT Cement Carrier 88

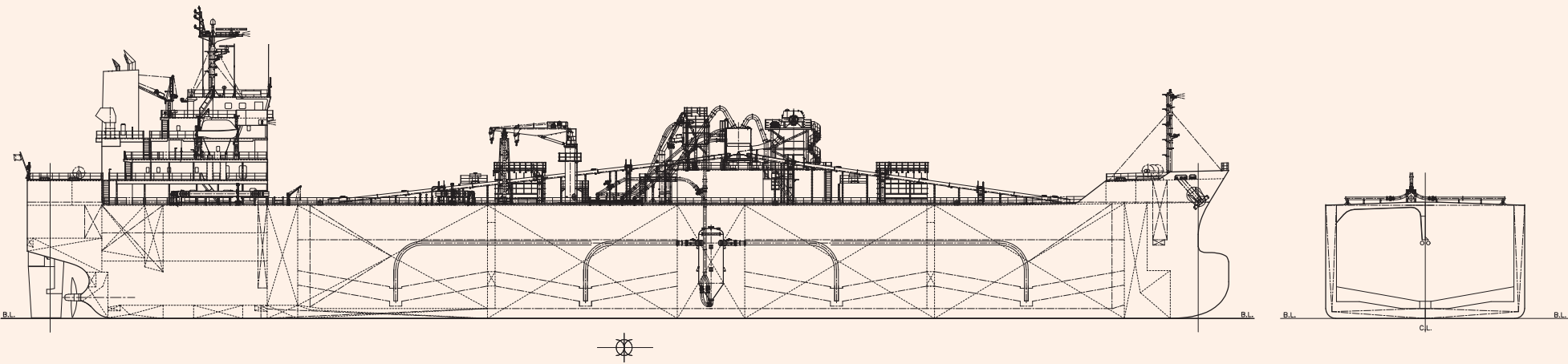
The 23,547-dwt Cement Carrier TAHO OCEANIA was built at Shin Kurushima Dockyard Co., Ltd., and delivered to a Taiwanese Owner in September 2019.

Features

- 1. The cement loading/unloading system has a capacity of 1,000 t/h mechanical loading and 500 t/h pneumatic unloading (2-lines).
- 2. The system consists of hold bottom air sliders, bucket elevators, etc.
- 3. Her hold is designed and built with special care for cargo residue.

PRINCIPAL PARTICULARS

Length (o.a.)	157.00 m	Main engine	MAKITA-MITSUI-MAN B&W 6S40ME-B9.5
Length (b.p.)	150.00 m	MCR (kWxrpm)	4,650 kW x 123 min ⁻¹
Breadth (mld.)	26.00 m	NOR (kWxrpm)	3,953 kW x about 117 min ⁻¹
Depth (mld.)	14.80 m	Speed (service)	13.6 knots
Draft (mld.)	9.50m	Complement	25 P
Gross tonnage	16,572	Classification	NK/CR
Deadweight	23,547 t	Loading capacity (grain)	23,547 m ³
		Builder	Shin Kurushima Dockyard Co., Ltd.



YOSHU NO.1 11,000 DWT Cement Carrier

89

☐ Contents ☐ By Builder ☐ By Ship Type



YOSHU NO.1 11,000 DWT Cement Carrier 89

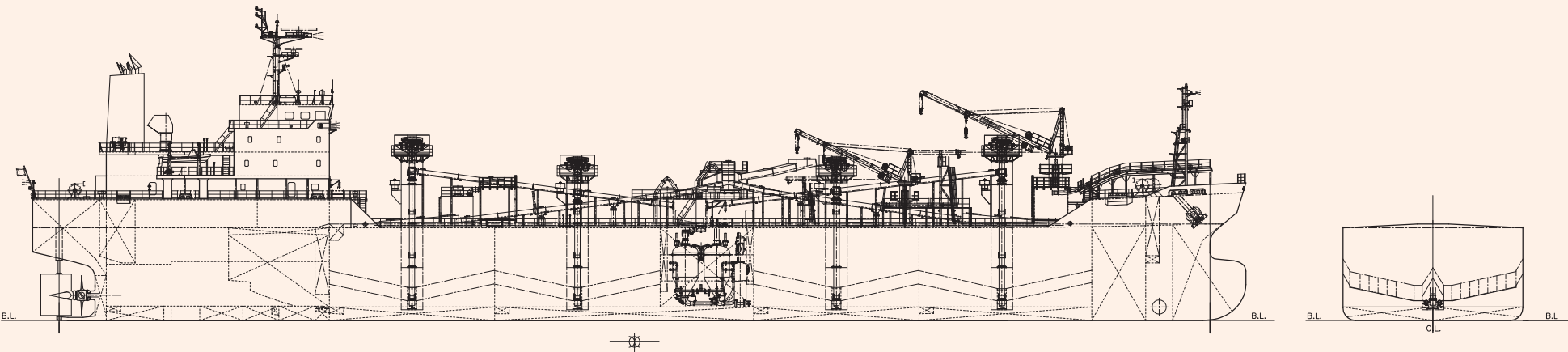
The 11,000-dwt type cement carrier YOSHU NO.1 was built at SHIN KURUSHIMA DOCKYARD CO., LTD. and delivered to the Japanese Owner in March 2021.

Features

- 1. The cement loading/unloading system has a capacity of 1,200 t/h mechanical loading and 500 t/h pneumatic unloading (3-lines).
- 2. The system consists of hold bottom aerations, air sliders on upper deck, vertical screw conveyors, cement blow tanks, etc
- 3. Her hold is designed and built with special care for cargo residue.

PRINCIPAL PARTICULARS

Length (o.a.)	134.98 m	Main engine	MAKITA-MITSUI-MAN B&W 7S35ME-B9.5
Length (b.p.)	128.00 m	MCR (kW×rpm)	5,100 kW x 157 min ⁻¹
Breadth (mld.)	20.00 m	NOR (kW×rpm)	4,080 kW x abt. 146 min ⁻¹
Depth (mld.)	10.30 m	Speed (service)	14.2 knots
Draft (mld.)	7.60 m	Complement	15 P
Gross tonnage	7,985	Classification	NK
Deadweight	11,337 t	Loading capacity (grain)	9,404.82 m ³
		Builder	Shin Kurushima Dockyard Co., Ltd.



SAKURA 503 Unit Car Carrier

99

☐ Contents ☐ By Builder ☐ By Ship Type



SAKURA 503 Unit Car Carrier 99

The 503 units car carrier SAKURA was completed in June 2021 at SHIN KURUSHIMA HIROSHIMA DOCKYARD CO., LTD. to the order of a Japanese Owner.

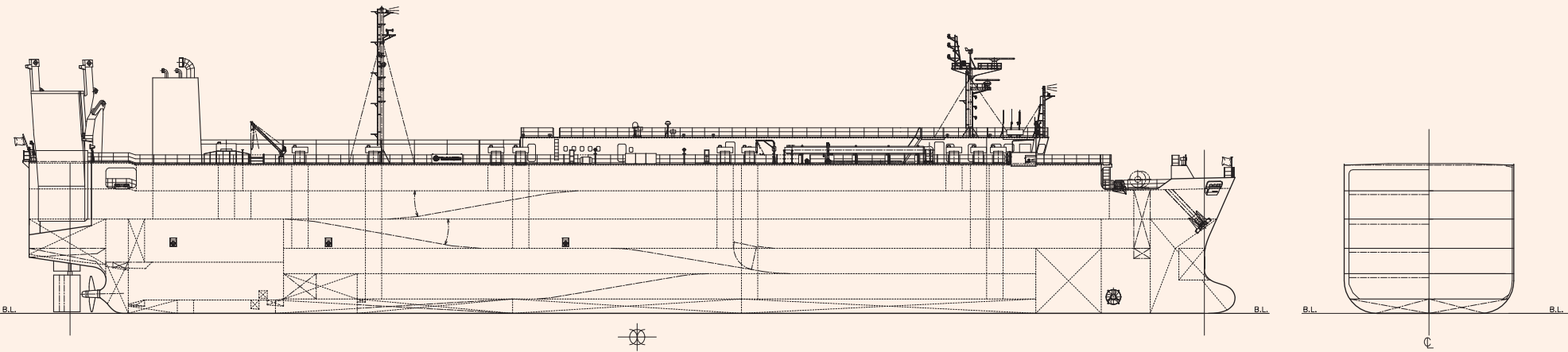
Features

- 1. The ship is designed and built for carrying cars.
- 2. The ship is designed and built as a single screw, diesel driven car carrier having a five (5) tiers car decks and one (1) tier accommodation deckhouse.

PRINCIPAL PARTICULARS

Length (o.a.)	118.03 m
Length (b.p.)	111.00 m
Breadth (mld.)	16.60 m
Depth (mld.)	14.52 m
Draft (mld.)	4.40 m
Gross tonnage	2,993
Deadweight	2,285 t

Main engine	MAKITA-MITSUI-MAN B&W 6L35MC6.1
MCR (kw x rpm)	3,900 kW x 210 min ⁻¹
NOR (kw x rpm)	2,925 kW x about 191 min ⁻¹
Speed (service)	16.0 knots
Complement	14 P
Classification	NK
Loading capacity (car/vehicle)	503 units
Builder	Shin Kurushima Hiroshima Dockyard Co., Ltd.



ORIENT KING 13,532 DWT General Cargo Ship 106

☐ Contents ☐ By Builder ☐ By Ship Type



ORIENT KING 13,532 DWT General Cargo Ship 106

The 13,532-dwt general cargo ship ORIENT KING was built at Shin Kurushima Hiroshima Dockyard Co., Ltd. and delivered to a Panamanian Owner in January 2021.

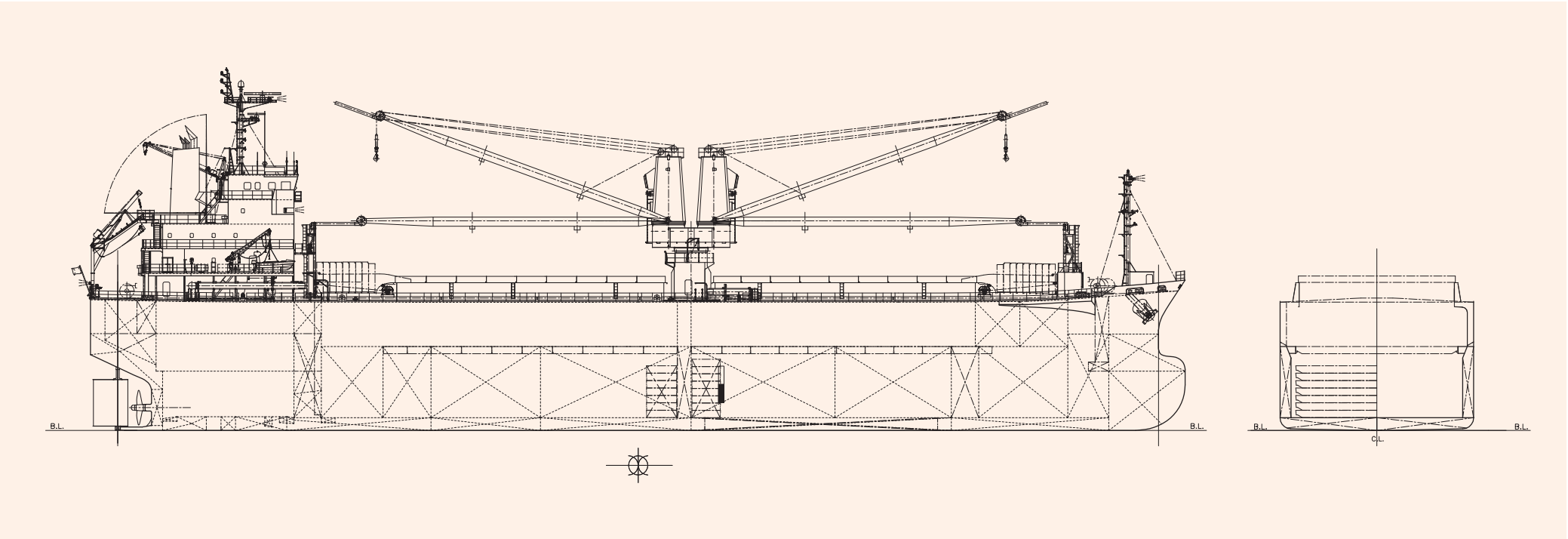
Features

- 1. The vessel has twin-deck cargo holds and the cargo holds are designed as suitable for carrying long-size cargoes.
- 2. Upper deck hatch covers are single pull type for No.1 hatch and No.2 hatch. Second deck hatch covers are pontoon type.
- 3. The vessel has 1 set of 72-ton electro-hydraulic twin deck cranes on the upper deck.
- 4. The ship can carry coal, grain(overstowing), chip, steel

coil, steel products, dangerous cargoes and general cargoes.

PRINCIPAL PARTICULARS

Length (o.a.)	119.93 m	MCR (kW×rpm)	3,570 kW x 173 rpm
Length (b.p.)	114.00 m	NOR (kW×rpm)	3,035 kW x about 164 rpm
Breadth (mld.)	21.20 m	Speed (max. trial)	15.15 knots
Depth (mld.)	14.05 m	(service)	12.45 knots
Draft (mld.)	9.15 m	Complement	21 P
Gross tonnage	9,943	Classification	NK
Deadweight	13,532 t	Loading capacity (grain)	19,550 m³
Main engine	MAKITA-MITSUI-MAN B&W 6S35MC7.1	(bale)	18,848 m³
		Builder	Shin Kurushima Hiroshima Dockyard Co., Ltd.



GLORY MAJESTY 8,617 DWT General Cargo Ship 107

☐ Contents ☐ By Builder ☒ By Ship Type



GLORY MAJESTY 8,617 DWT General Cargo Ship 107

The 8,617 dwt general cargo ship GLORY MAJESTY was built at SHIN KURUSHIMA HASHIHAMA DOCKYARD CO., LTD. and delivered to the Shingaporean Owner. in March 2021.

Features

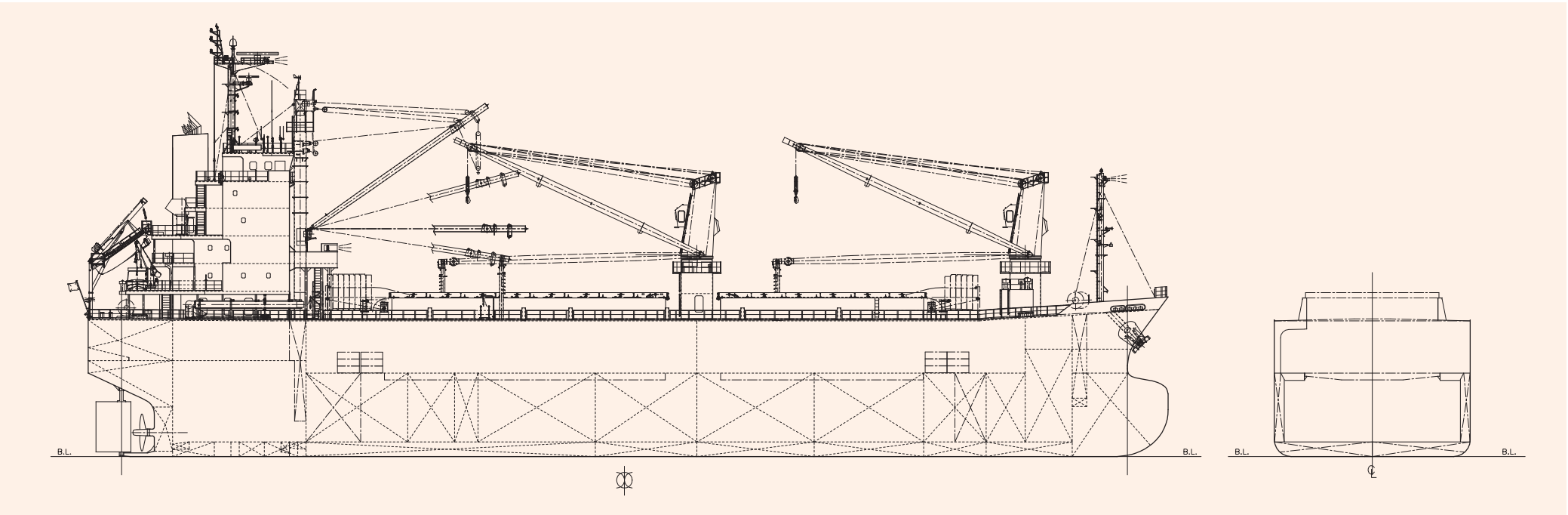
- 1. The vessel has two (2) cargo holds and the cargo holds are designed as suitable for carrying long-size cargoes.
- 2. Upper deck hatch covers are single pull type and operated by hydraulic motor and chain for No.1 & 2 cargo hatch.
- 3. Second deck hatch covers are pontoon type and operated by the deck crane, the derrick boom, and the manually operated trolley hoist for No.1 & 2 cargo hatch.

- 3. The vessel has two (2) sets of 30 ton electro-hydraulic type Single-deck crane and one (1) set of 30 ton KDY guylless type derrick boom.

- 4. The ship can carry packaged lumber, steel coil, steel products, dangerous cargoes and general cargoes.

PRINCIPAL PARTICULARS

Length (o.a.)	103.63 m	MCR (kW×rpm)	3,250 kW x 210 min ⁻¹
Length (b.p.)	96.50 m	NOR (kW×rpm)	2,438 kW x about 191 min ⁻¹
Breadth (mld.)	18.80 m	Speed (service)	13.0 knots
Depth (mld.)	13.00 m	Complement	23 P
Draft (mld.)	8.50 m	Classification	NK/CR
Gross tonnage	6,632	Loading capacity (grain)	13,062 m ³
Deadweight	8,617 t	(bale)	11,723 m ³
Main engine	MAKITA-MITSUI-MAN B&W 5L35MC6	Builder	Shin Kurushima Hashihama Dockyard Co., Ltd.



HAKUSEN MARU NO.3 1,300 HP Towing Tug 111

☐ Contents ☐ By Builder ☒ By Ship Type



HAKUSEN MARU NO.3 1,300 HP Towing Tug 111

The 1,300HP Towing Tug HAKUSEN MARU NO.3 was completed in August 2021 at SHIN KURUSHIMA HASHIHAMA DOCKYARD CO., LTD to the order of a Japanese Owner.

Features

- 1. The ship equips one (1) 9.8 kN towing winch on the fore side and one 9.8 kN towing winch on the aft side.
- 2. Two (2) sets of fire-fighting system are installed on compass deck.
- 3. Seventeen (17) people (including twelve (12) passengers) are able to be onboard.

PRINCIPAL PARTICULARS

Length (o.a.)	25.57 m	Main engine	Two (2) sets of 6NSD-Z
Length (b.p.)	22.50 m	MCR (kw×rpm)	478 kW x 1,450 min ⁻¹
Breadth (mld.)	7.70 m	Speed (max. trial)	11.85 knots
Depth (mld.)	3.30 m	Complement	17 P
Draft (mld.)	2.51 m	Classification	JG
Gross tonnage	112	Builder	Shin Kurushima Hashihama Dockyard Co., Ltd.

